



## At A Glance

### Project:

Dredging Works (Phase 1)  
Associated with Slipways  
Facilities at THHE Yard, Pulau  
Indah, Klang for Destini  
Shipbuilding & Engineering Sdn  
Bhd

### Owner:

Tabung Haji Heavy Engineering  
Yard

### Client:

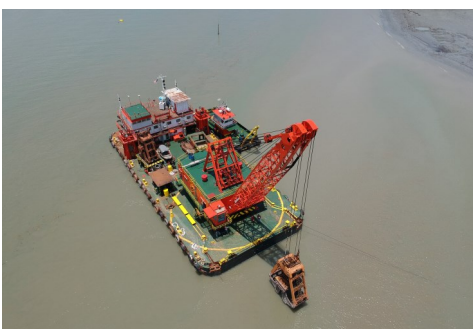
Destini Shipbuilding &  
Engineering Sdn Bhd

### Contract Sum:

RM 850,000.00

### Contract Period:

Phase 1: 01.01.2020—15.01.2020



## P109 : Maintenance Dredging at THHE Slipway, Port Klang

### Dredging Works

THHE yard is equipped with its own pier and slipway. It also houses fabrication, pipework, mechanical, electrical and carpentry workshops. Destini Berhad (DSBE) is currently delivering a series of three 83m Offshore Patrol Vessels for the Malaysia Maritime Enforcement Agency (MMEA) through a collaboration with TH Fabricators Sdn Bhd.

### Design Parameters:

|                            |                                   |
|----------------------------|-----------------------------------|
| Design Depth               | : -3.5mCD until -7.0mCD           |
| Disposal Location Distance | : 17 nautical miles               |
| Dredge Quantity            | : limited to 16,000m <sup>3</sup> |

### Vessel Deployed:

| No. | Equipment                        | Capacity            | Quantity |
|-----|----------------------------------|---------------------|----------|
| 1   | Grab Dredger                     | 13m <sup>3</sup>    | 1        |
| 2   | Non-propelled Split Hopper Barge | 1,000m <sup>3</sup> | 1        |
| 3   | Tug Boat                         | 1,000bhp            | 1        |
| 4   | Anchor Handling Tug              | 5T                  | 1        |

